

“Working Together for a Better Community”

NEROCHE VILLAGES

Newsletter

Issue No 15

March 2015

*For the Parishes of
Bickenhall, Curland, Orchard Portman with Thurlbear
and Staple Fitzpaine*

Annual Parish Meeting



Thursday 23rd April 2015

Neroche Village Hall

Doors Open 7.00pm

***YOUR ATTENDANCE AND SUPPORT IS
ESSENTIAL; PLEASE BE THERE!!!***

Welcome to the 15th issue of the Neroche Villages' Newsletter, which hopes to satisfy the need identified in the Parish Plan for a 'hard copy' local news and information medium delivered free to every household in Neroche Parish. The aim of this publication is to improve communication within the Parish by providing news and information on a wide variety of subjects and issues.



LOTTERY FUNDED

Foreword

By: *Wally Torrington (Project Coordinator) & Alan Perrior (Editor)*



Wally Torrington

In this issue of the Newsletter we have an eclectic assortment of articles covering the widest spectrum of subject matter: from one of our Parish Councillors climbing a mountain in South America, to a Staple Fitzpaine farmer attending an awards ceremony in London's Park Lane; and from a Bickenhall resident receiving a County Commendation for 'Service to



Alan Perrior

the Community', to the opening of a new extension at the racecourse – who could ever imagine there existed such a mix of diverse happenings involving the members of our small community? Also, there is a lot going-on in the parish, which is reflected in the number of adverts and notices for local events and activities appearing in these pages.

We have the coming local elections in May, and our Clerk to the Parish Council, Gillian Midworth, as part of her article on page 20, has kindly written a guide, on how you can apply to become a Parish Councillor.

As ever, if you have any comments or wish to produce an article for the Newsletter, please contact either of us (our details are on the back page). Moreover, if you would like to join the team and help, even in the smallest of ways, then please let us know. Or, you may have IT skills and be willing to help with the production; then that would be marvellous.

Finally, as you are aware, this Newsletter is delivered free to all 230 households and businesses in Neroche parish but financing this service-to-the-community is always a rather precarious balancing act. One of our main sources of income emanates from our readers contributions. Enclosed in this edition, is the donation slip which is circulated annually, we hope you will complete the slip and forward it with a small bequest. Many thanks and we hope you enjoy the read.

Pick Your Own Christmas Tree

By Wally Torrington



As part of the Staple Farm diversification strategy, this year Mark and Julie Pope held a 'Pick Your Own Christmas Tree' day (or, to be more precise 'Select Your Own Tree from the Plantation' day) which attracted over 200 customers, and sales/orders of some 70 trees. Many family groups turned up, blessed with gorgeous weather, and seemed to have an enormous amount of fun walking around the plantation selecting their trees (at times, it must be said, without a great deal of unanimity). The idea was for customers to stroll around the fields of Christmas

trees that were ready for harvest, and select a tree by tying-on a tag, then, simply stating which date they would wish to collect. On the day of collection, just a few hours before their arrival, the tree was cut, thus guaranteeing maximum freshness and minimum needle-drop (larger trees were delivered for a small fee). There was also a small selection of cut trees offered for sale in the yard.



Mark and Julie said that it all went very well albeit they have some ideas to make the event even more successful and enjoyable next year. They were delighted with the overall outcome and particularly for the excellent support they received from



the local community, and the advertising provided in the Neroche Villages' Newsletter and the Email Alert. Mince pies and hot drinks were available throughout the day and the proceeds donated to a local charity.

News From Neroche Hall

Richard Davies, Chairman of Neroche Hall Trustees, has agreed to produce a regular article for the Newsletter.

As we move into the New Year, the Hall Committee has been planning our forthcoming programme of events, as well as looking forward to improving our facilities. You will soon be seeing publicity advertising the films that are due to be screened over the next four months; indeed, those of you who follow us on our website will already be 'ahead of the game'.



Film Nights

We have a selection of excellent films to see us into spring, which started in January with



'What We Did On Our Holidays' a comedy with Billy Connolly, David Tennant and Rosamund Pike, from the writers of the TV hit 'Outnumbered'. February brings us **'Effie Gray'**, which looks into the mysterious relationship between John Ruskin and his teenage bride; it contains a host of our best British actors and actresses. The March offering is the comedy **'The Hundred Foot Journey'** starring Helen Mirren, and is set in France, featuring the completion and rivalry between a Michelin star restaurant and a nearby Indian restaurant. Lastly, April sees us exploring the story behind the cracking of the enigma code and the contribution made by Alan Turing, in **'The Imitation Game'** starring Benedict Cumberbatch, Keira Knightley and Matthew

Goode. I am sure this programme of films will appeal to many of our residents, and will prove a popular choice, so please make a note in your diary.

take art *HA*

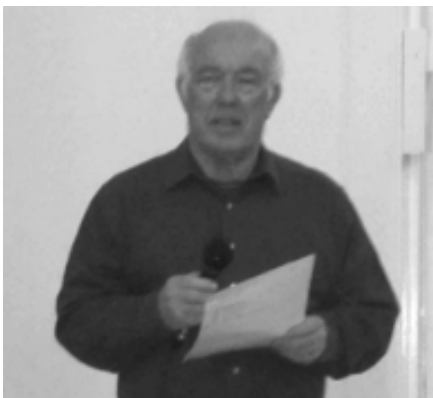
Take Art

We have a Take Art event booked for Friday 6th March, which will feature a performance of the ‘**Tenant of Wildfell Hall**’ by Anne Bronte, performed by the professional Bath based theatre company ‘Butterfly Psyche Theatre’. This is one of the many Take Art Events that are

produced in-and-around Somerset, and are keenly sought-after by many village halls wishing to offer something cultural, different and entertaining. Past productions have proved popular locally and attract followers from the wider area, so get your tickets early, they are on sale now.

Quiz Night

The ever popular Fish & Chip Quiz Night, with our quiz master Colin Croad, returns on Friday 20th March, so it will soon be time for you to refresh your general knowledge in readiness for the usual challenging questions.



Quizmaster Colin Croad

Dancing to the Kings College Band



The Kings College Big Band

Advance notice is also given for a dance to live music performed by Kings College Band on 2nd May, to include a hot buffet supper and bar. This will be to contemporary swing and music from the 60's. As always, you can obtain full details from our website -

www.nerochehall.org.uk by clicking onto either the calendar or ‘Coming Events’ page.

(continued on next page)

Hall Improvements

Finally, as part of our efforts to continue improvement of our facilities, the Hall has recently applied for a grant from the Lottery Fund's 'Awards of All' scheme. This is to enable us to purchase a new lightweight stage, replace the curtains in the committee room and provide an electrically operated white screen.

For many years we have struggled to erect our current stage, made of large and heavy wooden sections. It is not the most user friendly piece of kit, and usually requires three or four strong people to put up or take down. The new stage is lightweight, and not only can it be put up by one person but it can be built to any shape using the one meter square floor panels, thereby providing far more versatility.

The committee room curtains have probably seen their best days and we are seeking to replace them with thermally lined curtains that will assist in keeping out the cold winter draughts as well as freshening up the room.

Lastly, the electrically operated screen will be placed on the west wall of the main hall, can be lowered as required, then raised and stored discreetly when not in use. This will benefit anyone wishing to project material such as slides or power-point presentations and also provide a more attractive venue for meetings or conferences.



Naturally, grants are not easy to obtain in these austere times but we remain optimistic and hopeful that our bid will be successful. I hope to be able to update everyone in the next issue of the Newsletter.

Finally

Until next time, please continue to support your local hall by coming to as many events as you can or by joining one of the many and diverse regular user groups who are based there. Remember, the Hall is an amenity for all to use and enjoy.

Please refer to the film night advert on page 48, the King's College Band advert on page 49, the Take Art advert on page 47 and the quiz advert on page 46. Also, watch out for notices on all Neroche Hall activities in the Email Alert, plus, as always, all the information you need can be found on the Hall website www.nerochehall.org.uk

Take Care on Neroche Country Roads

By Wally Torrington



It is very rare for a Neroche Parish Council meeting to take place without the subject of traffic appearing on the agenda. More recently, it has been the proposed installation of a Speed Indicator Device (SID) opposite the polo ground.

Local residents will be pleased to hear, therefore, that a new campaign, to wake drivers up to the dangers of driving in the countryside, is being launched, following recent statistics that reveal six out of ten road fatalities happen on rural roads. With tight turns, hidden dips and slow moving agricultural machinery, navigating rural roads is nearly eleven times more deadly than driving on the nations motorways. That was the findings of research carried out by **Think!** the governments

road safety campaign group. It found that, on average, three people die on rural lanes and highways every day, with a total of 1,070 fatalities and 9,104 serious injuries on the nation's country roads last year.

The research also found that 80% of drivers said they had been surprised by an unexpected hazard on a country road, such as an animal, with a third admitting to taking a bend too quickly.



To improve road safety in rural Britain, part of the **Think!** campaign initiative is the use of an innovative 3D advertisement to illustrate unforeseen hazards on country roads, as it allows viewers to see through bends. It highlights the need to slow down to allow time to react.

For more information: <http://think.direct.gov.uk/country-roads.html>

Aconcagua Climb

Jason Jackson is a Neroche Parish resident who lives in Thurlbear; he is our local friendly architect and a great contributor to the local community (including being a Parish Councillor and a past Parish Council Chairman). In the Email Alerts leading up to December, you were informed about his forthcoming attempt, over the Christmas period, to climb Mount Aconcagua in Argentina; his aim being, to raise money for two extremely worthwhile charities. When you were sitting down with your family and friends', enjoying a roast turkey dinner, Jason was at 21,300ft, in freezing temperatures as low as -30°C, fighting through storms and struggling with a 60lb rucksack. This is his story...



Aconcagua

Our eight person expedition and three guides arrived at Medoza on the 14th December; we started our climb on the 17th, with a four day trek into base camp (4,200m). On the third day, a male team member developed High Altitude Pulmonary Edema (HAPE); as soon as the weather allowed, he and his daughter were evacuated by helicopter. On the 8th day (on the evening of Christmas Day), at High Camp 1, another member of the team collapsed, this time with migraines (probably High Altitude Cerebral Edema or brain swelling), during which we believe his heart stopped. The guides carried out CPR and brought him round



Picture 1

before he was rushed down to Base Camp; he, also, had to be evacuated by helicopter. The team was now down to 5 people.



Picture 2

On Christmas Day (before the third person dropped out) we were blessed with a glorious blue sky but were doing a 'carry' to Camp 3 (a half load run up, cache and back down). Christmas lunch comprised some cheese between two crackers. We did have two very small bottles of Argentinian champagne between nine people, however, the effects of alcohol are magnified by altitude so we struggled to finish them!

A day later than planned, due to the emergencies, we pushed-on-up from High Camp 1 to High Camp 2 (5,500m), then a straight move to High Camp 3 (the highest camp at 6,000m). The summit attempt was planned for the next day (29th) in order to reach the top before a storm, which was predicted for the 30th. All-in-all it was a very fast push up the mountain in order to hit the expected weather window.



Picture 3

Unfortunately, the storm forecast for the 30th arrived earlier than expected. We climbed as high as we could into a massive lenticular cloud, which enveloped the top of the mountain, but we couldn't get past 'Windy Rocks', a feature at around 6,500m (six times higher than Mount Snowdon!). It sounds close but the last 450m to the summit at 6,962m would take around five

hours for the round trip. The storm then went on to flatten High Camp 3 below us (five tents broken and one lost altogether, with all the kit - fortunately not

one of ours); this drove us back down to Base Camp. The storm lasted until the 3rd January, which meant we had no chance of a second attempt.



Picture 4

Picture 1. Taken from my highest point at 6,500m (21,300ft) with a Go Commando Mascot and the Andes spread out below us. I may well have been one of the five highest people in the world at the time (they don't climb in the Himalayas in December) but I'm certain the Col

*Kev Teddy was **the** highest bear on the planet!* **Picture 2.** This is me sporting the Prostate Cancer T Shirt at High Camp 2. **Picture 3.** The lenticular cloud at sunrise, which stopped us reaching the summit. I have film of it also, during which you can hear a terrifying roar like a jet engine. **Picture 4.** The group on Christmas Day, before the 3rd person dropped out that evening. **Picture 5.** The view over the Andes, taken on Christmas night.

All-in-all, it was a fantastic experience and I've made some great friends. However, I was still smiling, and I didn't hit my personal ceiling, so probably one to be repeated at some stage.

My thanks go to all of those who supported me and who have contributed to both of my nominated charities. In total, over £3,500 has been raised for Prostate Cancer UK, and £900 for GoCommando. The donations have been amazingly generous and far exceeded my expectations.



Picture 5

Advance Notice

Taunton Male Voice Choir in concert



**St Peter's Church, Staple Fitzpaine
Saturday 17th October 2015 at 7.30pm**

THURSDAY LUNCHEAS AT NEROCHE HALL

Come along to Neroche Hall and, for £5, enjoy a great home-cooked 2-course lunch. Meet people from the locality, take time out from your busy daily routine and enjoy conviviality & friendliness at a community lunch.

**Lunches take place on Thursdays at 12.30 for 1.00 pm
5th March, 2nd April, 14th May**

Please phone or email to book (need to know for catering purposes).
Transport / special diets can be arranged.

Contact Alison Brown tel: 01823 480441,
Email: alison-anthony@battensfarm.fsnet.co.uk
Organised by Friends of St Peter's Church

'Drinks and Nibbles' Party

By Wally Torrington



Alison and Anthony Brown recently hosted a most successful 'Drinks and Nibbles' party at their lovely home in Bickenhall, with the aim of raising much needed funds for St Peter's Church. It was a most successful and enjoyable event with more than forty locals attending. The liquid refreshments were plentiful, and the

hot and cold eats were delicious. As well as an entry fee, monies were also raised from raffles and 'guess-the-weight-of-the-cake' etc. In all, the event enabled £680 to be added to church funds – a great effort (most will go towards replacement chairs and the cost of new storage



benches). Alison and Anthony were ably assisted by members of the Parochial Church Council and other friends and supporters. Nicky Baxter made the quite excellent cake for the 'guess-the-weight' competition. It was such a lovely occasion and people really seemed to

enjoy themselves, catching up with friends, old and new.

As a parish, we are exceptionally fortunate to have such a magnificent, enthusiastic and active team of supporters for St Peter's Church; long may it continue.



'Guess the Weight' winner

Local Farmworker is Award Finalist

By Holly-Jane Harris



Graham and his partner Kathy Harris

Graham Glasper works for Mark and Julie Pope at Staple Farm. He was nominated for 'Farmworker of the Year' at the 2014 Farmers Weekly Awards. The awards are a celebration of the diversity and innovation in British farming, and are widely recognised as 'the Oscars of the UK Farming Industry'. The event was a glittering celebration of the achievements of the 45 finalist. This is Holly-Jane Harris's account of the award night at the Grosvenor House Hotel on Park Lane in London.

After months of waiting, Thursday 2nd October finally arrived for family and friends to proudly accompany Graham Glasper to the Grosvenor House Hotel in London for the 2014 Farmers Weekly Awards. Graham, who started working at Staple Farm in 1988 for Marks Parents Bryan and Jane, had been nominated for 'Farmworker of the Year'. Ten of us caught the train to London, to enjoy what is generally renowned as the night in the farming calendar.



The Awards Night programme

7.00pm – Champagne reception

8.00pm – 3-course dinner with wine

9.45pm – Entertainment and Awards ceremony

11.00pm – Close of Awards ceremony

11.15pm – Post-Awards entertainment includes dancing to a live band

1.30am – Bar closes and carriages depart

Arriving at The Grosvenor, gents in 'Black Tie' and the ladies in evening dresses, really does give the feeling of being rather



*Susan Glasper (Graham's Step-Mother)
Holly-Jane Harris, Julie Pope, Elisabeth Harper*

special; everyone was buzzing - especially me!! The host for the evening was The Great British Bake Off presenter, Sue Perkins, and the announcer was Alan Dedicoat (the voice of the National Lottery). More than 1200 guests were seated in The Great Room to share in the celebration and achievements of the finalists and winners from the 15 different categories. After enjoying a delicious three course meal, the awards commenced.

The title of 'Farmworker of the Year' went to George Manning, a 75 year old from Suffolk; sadly not to Graham.

However, getting into the top three, from the whole of UK is a major achievement in itself, and, as the editor of the Farmers Weekly said, *"Congratulations to everyone who made the short list as they are all winners in reaching this final stage of a fiercely fought competition"*.

The judges chose to highlight three of Graham's numerous outstanding qualities:

- He is delegated an enormous amount of responsibility as part his duties on the farm, which he takes extremely seriously, and in his stride - it's almost as if it's his own business.*



Champagne Reception

- He is happy to turn his hand to any aspect of the much diversified Staple Farm Enterprises.*

- Attention to detail is evident in everything he does. His technical skills are second to none.*



In 'The Great Room' the Banquet Awaits

When the awards ceremony was over, the band started and we were all up on the dance floor until 2am, 'partying the night away!'

The following day was spent touring London: a trip on the London Eye; a walk around Trafalgar Square; and a little bit of

shopping - to name but a few.

I have to say that a most enjoyable time was had by all; a fantastic experience. That having been said, I was very glad to be home – back to enjoying the peace and quiet of our lovely local community!

Many congratulations to Graham for such a great achievement; we are all extremely proud of you. It is an attainment to be proud of; **WELL DONE GRAHAM!!!**



The awards presented, the banquet consumed, it's time to start partying! (Kathy, Holly-Jane, Graham, and friends from Frogmary Green Farm)

Finally, the group would like to thank Mark and Julie for generously sponsoring their attendance at the Grosvenor House Hotel, which was greatly appreciated (what great employers and friends).

Graham is no stranger when it comes to honours and accolades from the farming fraternity, and, as a consequence, has become something of a celebrity in the local community. He was acknowledged in both 2013 and 2014 as one of UKs best Farm Sprayer Operatives at the nationwide FSOOTY Awards sponsored by Sygenta.

Neroche History Group

By Jane Hole

(Chair of the Neroche Local History Group)

Our speaker in November was Gavin Saunders, Co-director of Neroche Woodlanders. He gave a fascinating talk, accompanied by a series of beautiful slides, about the natural and social history of hedgerows. The origin of many hedges stems from the enclosures of the 18th and 19th centuries, whereby common land was appropriated by landowners for ploughing and pasture, and hedges became boundaries declaring ownership. These hedgerows help make up the picturesque landscape we know today.



Hedgerows will range in ages from the truly ancient remnants of the wild wood, which happened to be on a border of a newly created field, to those recently planted. Around Neroche Hall there are a variety of boundaries, some as recent at 1960, and others dating

back to the 1880's enclosures. Cold Copse Coppice has a boundary bank with bluebells on one side which Gavin suggests meant it was a field in the 1880s.

An example of a different type of local boundary is revealed in aerial photos of Poundisford Park which show the Park Pale - a bank and ditch created to retain deer in the park. Nearby at Barton Grange are a few examples of extremely veteran oaks, which have become squat with age, with girths of 6.5 metres and their top growth lost to time.

There are geographical variations with hedge laying style, for example Midlands's style will be at ground level whereas West Country style will usually be on top of a bank.

Gavin explained "Hooper's Rule" which is used to tell the age of a hedgerow; all the species within 30 yards are counted, with each one representing a century of growth. Apparently this can be used as a rough guide in the eastern side of the country but less so in the west where hedges are far more rich in species.

Within the local area there has been resurgence in the art of hedge laying. “An enthusiastic group of people living and working on the Blackdown Hills who are dedicated to preserving the craft of hedge laying” have created the Blackdown Hills Hedge Association. If you are interested in learning about these old skills see www.bba.info for more details.

The session finished with the recognition we are lucky that within our parish, past and present landowners and farmers have left large trees in the boundary hedges leaving us the legacy of many wonderful oaks that grace the local landscape.



NEROCHE LITTER ACTION GROUP

**The next community litter pick up day is
planned for Saturday 7th March 2015**

(Meet at the Greyhound pub car park at 10.00am)

If you have a high viz jacket, suitable gloves, pickup sticks please bring them along; alternatively they will be provided.

Resulting from the parish plan, a Litter Action Group has been formed to keep our parish grass verges clean and tidy; we have had excellent support and participation since we commenced in 2011 and we hope this day will be equally successful.

We are also looking for volunteers (min age 18 years) to:

- Join in community pick up days to deal with the parish ‘black spots’.
- Adopt a stretch of road and be responsible for keeping it free of litter

If you are able to offer a couple of hours on the 7th March please join us as above or if you want further information contact:

Anthony Brown: 01823 480441

Jayne Hunt: 01823 480113

Rob Larkman 01460 234237

West Somerset Singers

By Marianne Bray

Those of you who attended the 'Comfort and Joy' concert given by The West Somerset Singers at St Georges Church in December could not have failed to have been impressed by the quality of the event and the professionalism of the choir. It gives even greater pleasure considering that four of the choristers are our very own Neroche residents: Diana Davies, Judy Donovan, Julie Pope and Marianne Bray (Marianne is celebrating 40 years with the choir this year – she was just a child when she joined!). All the forgoing gave rise to us asking Marianne to pen a short article about the choir, which we trust you will enjoy.



The West Somerset Singers is an amateur choir of approximately forty voices. Despite the name, they are based in the Taunton Deane area. Rehearsals take place in the Gwyn Williams Music Room at Taunton School every Monday evening during the autumn and spring terms. Two public concerts are staged each year, usually at a venue within the Taunton Deane area. The choir has also participated in local events e.g. leading the Carol Service broadcast over Apple FM for patients and relatives at Musgrove Park Hospital, and entertaining visitors to Dunster Castle by singing carols this Christmas.

Arthur Temple, then head of music at Taunton School, founded the choir in 1945. It was his intention to perform unusual works in contrast to the Taunton Choral Society. There have been several changes of conductor over the years but Arthur Temple's original concept of performing little known works has

largely been maintained, although the choir has also performed some well-known favourites.

The current Musical Director is David Knight who took over the leadership in 2013. He was educated at the Royal Academy of Music and the University of London. He has been a church organist for over forty years and has performed in churches around the world. He is also Musical Director of All Saints' Church, Dulverton, and Casterbridge Male Voice Choir.



The choir is celebrating its **70th Anniversary** this year, with a concert at Taunton Baptist Church, Silver Street, Taunton on **May 16th**. The programme includes Rossini's 'Petite Messe Solennelle' and an arrangement of Psalm 150, composed by David specifically to mark the anniversary

The choir became a registered charity in 1994, and its object is to promote and develop public education and appreciation of choral music by the performance of public concerts. The management of the choir is led by a committee, which is elected annually from the members. Members pay a small annual subscription, which helps finance the cost of performances.



The choir welcomes new members, and as a 'taster' they are hosting a '**Come and Sing Day**' on **Saturday 31st January** at Taunton Baptist Church when there will be an afternoon rehearsal (2.30pm) followed by a performance of Rutter's Requiem at 5pm. Further information can

be obtained from www.westsomersetsingers.org.uk or contact any of the above named members.

News From Neroche Parish Council

Our Clerk to the Parish Council, Gillian Midworth, has kindly agreed to produce a regular feature for our Newsletter.

Thursday 7th May 2015 will be a landmark election day. Not only will it be the first general election since the introduction of fixed term parliaments, it will also coincide with elections for most parish councils.

Prior to 2013, when a parliamentary election was called on the date for ordinary local government elections, parish council elections had to be postponed for three weeks. However, following the repeal of *section 16* of the *Representation of the People Act 1985*, parish council elections may be held on the same date. This May will be the first occasion this has happened.



Becoming a Parish Councillor

Neroche Parish Council is unusual as it comprises four different parishes, Bickenhall, Curland, Orchard Portman with Thurlbear and Staple Fitzpaine. Each parish provides three members of the Parish Council, making a total of twelve Councillors. Most Councillors come into office after standing as a candidate at an ordinary election. The term of office is four years. Candidates must complete a form of consent to nomination and provide a nomination form, signed by a proposer and seconder.

Where the number of validly nominated candidates exceeds the number of vacant seats on the parish council, the principal council organises a poll. If the number of candidates is the same or less than the number of vacant seats, the candidates are elected without the holding of a poll; they are ‘elected unopposed’ once the closing deadline for nominations has passed.

Candidates for election must be at least 18 years of age on the day of their nomination and must be a British citizen, an eligible Commonwealth

citizen or a citizen of any other EU member state.

They must also meet at least one of four other criteria:

- They are, at the date of their nomination (and continue to be), on the electoral register as a local government elector for the parish or community in which they wish to stand.
- They have occupied, as owner or tenant, any land or other premises in the parish during the whole of the 12 months before the day of their nomination and the day of election.
- Their principal or only place of work during the whole of the 12 months before the day of their nomination and the day of election has been in the parish.
- They have lived in the parish, or within 3 miles of it, during the whole of the 12 months prior to their nomination and the day of election.

Some potential candidates are disqualified from election or holding office. Disqualification applies if the person:

- Holds paid office or employment with that council.
- Is the subject of a bankruptcy restrictions order (or interim order) or a debt relief restriction order.
- Has, within five years before the date of election, or since his/her election, been convicted in the UK, Channel Islands or Isle of Man of any offence and has been sentenced to imprisonment (whether suspended or not) for a period of not less than three months without the option of a fine;
- Is disqualified for corrupt or illegal practices; or has been disqualified from holding office by a court or tribunal

The nomination papers will be available from 2nd March 2015 from the Returning Officer, TDBC, The Deane House, Taunton; and from the Clerk at nerocherpc@nerochevillages.org.uk. The completed nomination forms need to be received by the Returning Officer by 4pm on 9th April 2015.

Award for Service to the Community

During the period since writing my article for the Newsletter in November, I'm delighted that the Parish Council's nomination for Alison Brown to be considered for the Somerset County Council Chairman's Award for Service to the Community, met with success. Alison was presented with her award at a special ceremony held in Taunton.

A comprehensive citation for the award was submitted by the Parish Council, detailing all her many and varied good works, for: St Peter's Church; Neroche Hall; and in the wider local community. A glowing summary was read out at the ceremony,

which is shown below. Well done Alison, and warmest congratulations from all your many friends in Neroche Parish and beyond.



SOMERSET COUNTY COUNCIL

The Chairman's Award for Services to the Community 2014

MRS ALISON BROWN

"This citation invites recognition for the outstanding contribution made by Alison Brown to the local community of Neroche, by fund-raising, event organising, charitable and benevolence work, good deeds, and general good neighbourliness and kindness. Her selfless spirit and goodwill knows no bounds, and her seemingly infinite energy and enthusiasm for helping others is, at times, breath-taking. Alison is a pillar of the local community who is greatly respected and held in the highest regard by all members of Neroche Parish; local village life would be very much the poorer without her. She has made, and continues to make, a quite exceptional and selfless personal contribution to the lives of others, and it is fitting that she is receiving this public recognition."

News From Somerset County Council

Ross Henley, our Somerset County Councillor, has kindly offered to write a regular column for our Newsletter.

In January I joined the Neroche Walking Group for a 6¼ mile Saturday morning walk. The weather was very wet and windy to start but soon cleared; it was such a nice relaxing time. We started from Tim French and Jane Hole's house in Curland then walked into the Neroche Forest where they were able to point out some lovely views. We ended up at the Greyhound Inn where we all had a very nice, friendly lunch. I have represented Neroche Parish

for only a short time but everyone has made me feel so welcome. In mid-December I made a couple of visits to the Artisan Bakery in Bickenhall, where I purchased some lovely croissants and bread for the Christmas holiday, and also enjoyed a small glass of their home made mulled cider. I called-in again on a Friday to pick-up one of their delicious pizzas.



Keeping fit with the Neroche Walking Group

where he was booked to give a talk on his previous work as head of The John Lewis Partnership, and how it was such an ethical company. It was only after a few minutes that he said that he was now chair of the Crown Estates. When I raised my hand and was invited to be the first person asking a question from the floor, I saw his face drop as soon as I introduced myself as the Somerset County Councillor for Neroche Parish. Now I'm sure many in the room had never heard of Neroche Parish but you could tell straight away he had! I challenged him over my perception of the lack of ethics and morality shown by the Crown towards its tenants, and the shabby way it had treated people, and even how they made local residents unwell with all the stress the Crown Estates

had piled onto its tenants. His defence of the Crown Estates policy to change its business model and divest itself of some of its rural properties was frankly pathetic. I knew that my questions were not going to change his mind but I am pleased I finally had the chance to challenge this man in public, in front of hundreds of people, and tell him of our disgust at the way the Crown Estates has behaved towards the local community.

As I write this article, I have just been to visit Thurlbear School to present them with a £250 cheque from my County Councillor Health and Well Being Budget for the schools Garden Gang Club. Finally, I managed to get along to a Thursday Lunch Club event at Neroche Hall. The food was again excellent and I enjoyed very nice company.



Presenting a £250 cheque to Thurlbear School

News from the Forestry Commission



View from Castle Neroche

It's nice to be able to introduce ourselves to you and to give a brief update on what's happening.

Although the Neroche and East Devon Team have been working in the area for many years, we have recently undergone a restructure which has resulted in the team now being based out of an office at Wych Lodge. Currently, we don't have any phone

lines or internet connection but we hope this will be resolved soon. Whilst we've been working in the area for many years, and will have bumped into many of you, it's great to finally have a base within the community. We'll update you with contact numbers in a future article.

Thankfully, we haven't had the repeat of last year's storms, and the most recent bad weather hasn't resulted in many more trees coming down. Currently, we're busy completing tree safety inspections and are beginning to plan site

maintenance work for the coming year. We have started at Staple Hill by removing the gates along the 'all ability trail' to improve access and we plan to 'smarten up' the car park surroundings as spring approaches. Routine harvesting works are in the pipeline for 2015, and we will keep you posted with signage on site and via this newsletter.

In the meantime, if you want to get hold of us you may be lucky to catch us in the office or contact by email:

Jon Burgess – Forester jon.burgess@forestry.gsi.gov.uk

Andy Harris; Recreation and Community Ranger andy.harris@forestry.gsi.gov.uk

Sam Negus – Works Supervisor sam.negus@forestry.gsi.gov.uk

Brian Turley – Wildlife Ranger

Jon Lukins and Stu Taylor - Craftsmen

Computer Users Beware!

By David Symmonds

Two local residents have just recently had to pay over £100 to have their computer unlocked after responding to a telephone scam call pretending to be from Microsoft. The caller says that they are from Microsoft and have diagnosed a problem with your computer.

*If you receive such a call, **Hang up immediately!!***



If you continue, you will be asked to check your computer (does not apply to an Apple Mac) and they will download a virus that will lock up your computer.

The callers then ask for a sum of money to unlock your computer, and more serious is the fact that they have your credit or debit card number and have been known to take further amounts.

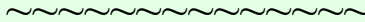
*Any legitimate email from a bank should have at least both your name and postcode included to prove that it is genuine. Even then be careful about sending any reply which might include your account number. **No bank will ever ask you for your PIN number.***

Neroche Annual Parish Meetings

*For the Parishes of Bickenhall, Curland, Orchard
Portman with Thurlbear and Staple Fitzpaine*

***Thursday 23rd April 2015 - Neroche Hall
Open 7.00pm - Formal Presentations Start 7.30pm***

Jon Bell, Parish Council Chairman
Presenting the Annual Report



**THE EVENING WILL ALSO INCLUDE A NUMBER OF
PRESENTATIONS OF LOCAL INTEREST; THE SUBJECTS
OF WHICH WILL BE ANNOUNCED CLOSER TO
THE EVENT**



**Stroll around the stands (representing numerous
local clubs, organisations and groups), speak with
club representatives, event organisers, Action Group
members, and meet your Parish, Taunton Deane
and Somerset County Councillors.**

**This is the most important local event of the year.
Your support is essential; please be there.**



FREE 'cheese-and-wine'
*and other
refreshments served all evening*



***Annual Parish Meetings for Bickenhall,
Curland, Orchard Portman with Thurlbear,
and Staple Fitzpaine***

Thursday 23 April 2015

Neroche Village Hall – Doors Open 7.00pm

In accordance with the Local Government Act 1972, every English Parish must hold an Annual Parish Meeting between 1st March and 1st June each year, and it must take place after 6.00pm



The Annual Parish Meetings is one of the most important local events of the year. An occasion when: residents can make their voices heard; meet their Parish, Borough and County Councillors; learn more about local, social and sporting activities; and be updated on the progress being made by local Action Groups. It is also an opportunity to find out about all the excellent work going on in the parishes and the wide variety of activities that are taking place, and, more importantly, become involved if you so wish. There will be guest speakers, and stands for all the clubs and social organisations in the parishes to advertise their activities. Free refreshments, including wine and cheese, will be provided for everybody attending. It is most important that as many local residents as possible attend. This year's event will be taking place during the evening of Thursday 23 April 2015 in the Neroche Hall; **please put the date in your diary.**

***YOUR ATTENDANCE AND SUPPORT IS
ESSENTIAL; PLEASE BE THERE!!!***

Gardening Corner

Rebecca Pow, a local journalist, broadcaster and PR consultant specialising in gardens and rural issues, has kindly agreed to write a regular column for our Newsletter. Rebecca opens her garden, Tuckers Farmhouse in Stoke St Mary, by appointment for groups of 10 or more. www.rebeccapow.com 07900 685 303.



As I've mentioned in this column before, I always try to garden with wildlife in mind, and, as such, I leave all the foliage in my garden borders throughout the winter to provide shelter for overwintering insects, and seeds and berries for the birds. I start my big cut-down during February, and by March it's all done. It's rather cathartic, a bit like spring cleaning! Whilst we live in a wonderfully rural area here in Neroche, with its leafy lanes and extensive wooded hillsides marching up to the Blackdowns, on a wider scale, many natural habitats have been lost, so anything we gardeners can do to compensate for them, and provide homes for our fellow creatures, will be beneficial.



Mistle Thrush

I was delighted to see a Mistle Thrush hopping across the lawn recently, and there are always a bevy of blackbirds here together with my 'pet' flock of house sparrows, and regularly a flurry of goldfinches swooping in on the teasels left over winter. So perhaps my wildlife aims are working. There were also a noticeable number of Peacock and Red Admiral Butterflies in evidence early in the year, which had successfully hibernated and were tempted out of their dormant state by some early sunshine. Butterfly Conservation reported a string of reports of early sightings across the country; you may have seen some early butterflies yourself? Locally, an area adjacent

to Thurlbear Wood has been one of the last strongholds of the rare Duke of Burgundy butterfly; I hope this too will see a better year. If you personally want to help butterflies, the best thing you can do next winter is to leave bushes un-pruned and leaf litter undisturbed. Over-wintering species need safe, sheltered places to protect them from the elements.



Duke of Burgundy Butterfly

As gardeners, we all appreciate how crucial insects are in terms of pollinating crops and, of course, they are vital for our agricultural crops too. I hope that, before too long, we will see some of our local farmers entering into the new CAP Wild Pollinator Scheme, which encourages the sowing of a range of nectar rich flower mixes for pollinators, and especially for bees and even beetles! I applaud the government Pollinator Strategy, which is also encouraging this kind of approach with grants. I am sure these flowery margins will also look lovely in our countryside too!

Get Gardening

March is a busy time in the garden, with everything starting to grow apace, and the temperatures on the whole warming up. Those dreaded weeds get going too; if you can, do keep on top of them, so that you don't have a big problem later. As well as general planting and tidying up, now is the time to get cracking in the vegetable garden, and if you do nothing else, put in some onion sets and seed potatoes now.

Get-Set

I love growing onions; they grow so fast so you have a lot to show for your efforts, and it's so useful to have them on hand for cooking. My crop last year took me right through the winter. All you need is a sunny, sheltered area to grow in, with well-draining soil; raised beds, veg plots or deep containers (with a minimum of 6 inches of soil depth) are perfect. I never bother to grow onions from seed but always sow sets (these are second season onions that have been grown from seed during the previous season) and there are always plenty available from local garden centres, but hurry if you haven't got yours yet.



Onion Sets

Plant them directly into the ground, mine are in raised beds, so I plant them pretty close together (less than a hand space) with just the tip of the bulb showing. Sturon and Setton are always good reliable varieties; and my favourite red variety, which is slightly sweeter than the white ones, is Red Baron. You can keep sowing onion sets into May.

Spuddling about with Spuds

It is potato planting time too, and potatoes again are another stalwart of my veg patch.

They are so rewarding to grow, giving

anything from 6 to 12 tubers from a single seed potato. I fill several raised beds with a range of varieties to take me through the months, starting with ‘first earlies’ (my favourites are Rocket and Lady Christl) then ‘second earlies’ (I like Maris Peer and Wilja) and finally main crop varieties (try Maris Piper, Charlotte or Wilja). If you are tight for space, potatoes can be grown in containers, quite successfully, or you could try the special root vegetable planters now available, which will enable you to grow 4 separate varieties in one container. If you still need to get hold of seed potatoes, look out for some of the fascinating Potato Days being held around the country where you will be amazed at the range of varieties on offer. Some combine with Seed Swap days too (where you can exchange your surplus seeds with fellow gardeners). Seed potatoes need to be ‘chitted’ when you put them in (that is, sprouting little shoots from the tuber, which happens naturally if you lay the tubers in an old egg carton on a cool window sill for a few weeks.). Then plant them in a trench, in a well composted bed about 15cm deep and 30cm apart (35cm for main crop), in rows 60cm apart. Once shoots are showing above the soil, heap up the soil to cover



'Chitted' Potatoes

them (earthing up) and keep them watered, especially when they are flowering and potatoes are forming.

Nearby Pennard Plants Nursery www.pennardplants.com will be exhibiting at a special Potato Day and Seed Swap on Saturday 14th March 2015 at Timsbury Conygre Hall, North Road, Timsbury, nr Bath, BA2 0JQ. For details of other seeds and Potato Days www.seedysaturday.org.uk

Other Jobs to do in March

- Protect new spring shoots from slugs
- Plant summer-flowering bulbs
- Lift and divide overgrown clumps of perennials
- Top dress containers with fresh compost
- Mow the lawn on dry days (if needed)
- Cut back *Cornus* (dogwood) and *Salix* (willow) grown for colourful winter stems. I do this on a rotational basis so that I cut back two thirds of my bushes and leave a third to develop flowers and leaves.

Take A Break

All hard working gardeners need to stop for a cuppa and a snack. I found the perfect treat when I called in to the Artisan Baker, who operates out of Park Farm in Bickenhall. Here you will find unparalleled homemade croissants and tasty bread, and if you get there early on Saturday mornings you'll also find



Delicious Bread from the Artisan Baker in Bickenhall

a fine assortment of mouth-watering cakes too. They also sell pizzas on a Friday evening. This definitely ticks the 'buying local' box! For more info, go to: www.breadbedandbreakfast.co.uk; email: breadbedandbreakfast@gmail.com or phone 01823 480878

Happy Gardening!

Focus on Local Business



Lightwork Energy Systems is our local specialist in the installation and maintenance of a wide range of renewable energy solutions for homes and businesses. It is a family run enterprise, based at the top of Hare Lane, just a few hundred yards from the south east corner of our parish boundary.

Founder, Patrick Criddle, has been installing solar and other renewable energy systems locally since 2007, and knows our parish well. Experienced and accredited, he can help with any queries regarding renewable energy, and the financial grants and benefits available. For full details of all the services offered, please see the enclosed flyer or go to www.lightworkenergy.co.uk

From initial consultation through to installation and maintenance, Lightwork Energy Systems will provide a personal service to help you identify the right solution for your property and personal needs. They pride themselves on their 'whole house' approach, and recognise that there is no 'one size fits all' solution when it comes to renewable energy.



There's a vast range of building styles and ages of properties in our parish, from old farmhouses and period cottages through to new builds and modern conversions, so it is essential to get proper advice about what systems and technology will work best for your property. And if, for any reason, renewable energy is not appropriate, Lightwork Energy Systems can install a traditional oil boiler or help you find some other suitable alternative.

APPROVED INSTALLER



With an emphasis on high quality products, good service and no 'hard sell', Lightwork Energy Systems are able to provide all the advice, equipment and services needed to make sure you get

the right renewable energy solution for your home or business; as well as providing a full maintenance and repair service.

We asked Patrick ***“Is it still worth putting Solar PV on your roof now that the payments have been reduced?”*** He responded: *“I get asked this all the time. Most people now know that, in the early days, installing a solar PV System on your roof was a great investment, but now, with lots of media coverage about reduced payments from the government, the public think they have ‘missed the boat’. Well, let’s see.....The Feed-in-Tariff was introduced on the 1st of April 2010. At that time, a 4 KWp solar PV system would cost in the reign of £17,000, with a benefit of circa £2,000 per year, resulting in a pay-back in 8 to 9 years; an investment return of 11.7%.*

So where are we now? The same system today would be around £10,000 cheaper! Currently, a Solar PV system costing, say, £5,500 will give (with the reduced Feed-in-Tariff rate) a typical benefit of £750-£950 per year. This is a pay-back of around 6½ years, and a return on investment of about 15%; these payments are guaranteed by the government for 20 years, tax free, and index linked.



That is all very well, I can hear you say, but the government might find a way out! The fact is, they can’t, the rules are enshrined in an act of parliament, thus protecting the investor.

Added to all this are the major advances that have been made in renewable energy technology since the early days. There are more and more clever devices to maximise on the electricity you are generating. For example: a Solar Immersion Switch will give you free hot water throughout the summer; and new, more efficient solar panels that take-up far less space on you roof.”

It would seem, therefore, that there has never been a better time to invest in a Solar PV System. Is there a better, safer, investment on the market today? Why not contact Patrick on 01460 234930 or email info@lightworkenergy.co.uk for a free, initial, no obligation consultancy, in your own home.



Taunton Deane Borough Council News

John Williams, Borough Councillor for Neroche Ward and Leader of Taunton Deane Borough Council, has kindly offered to write a regular column for our Newsletter.

John has also written an update on local flooding, which, due to the limited space in this Newsletter, has been placed on our Website www.nerochevillages.org.uk



Improvements to the A358/A303/A30

In my last article, I referred to the hope that we would get some Government support for the A358 upgrade. I am delighted to report that we have received a tremendous boost by way of a funding allocation in the Chancellors Autumn Statement. The A303 and A358 are now regarded as being a priority for improvements. This has resulted in a funding allocation of £296 million for the A358 and a further £400 million for the A303, to be drawn down over the next 5 years. Great news but even better is that the serious congestion and safety problems, which exist along the A358 and at Sparkford on the A303, have been recognised as needing urgent action; these projects are scheduled to be completed by 2018.



Also, no doubt, the proposals for the A303/A30 route across the Blackdowns will be of interest. The plans are to carry out specific improvements at known pinch-points along the route, and carry out general improvements, but not to form dual carriageway through this highly environmentally sensitive area.

When announcing the funding, it was said the Government's intention is to create an "Expressway" from the M3 to the M5 at Taunton. This will ensure it is dual carriageway throughout its length, so removing the present single carriageway bottlenecks and safety hazards besides the inevitable economic boost that improved infrastructure brings with it.

I am aware of scepticism over whether the funding will be withdrawn or re-allocated, it has happened before, but I have received reassurances that this time is different, let us hope so! The main difference is that the Highways Agency is being charged with delivery of highways improvements with an allocated budget, the A303/A358/A30 are very much part of the programme of works set out, and the funding announced will become part of their budget.

Superfast Broadband

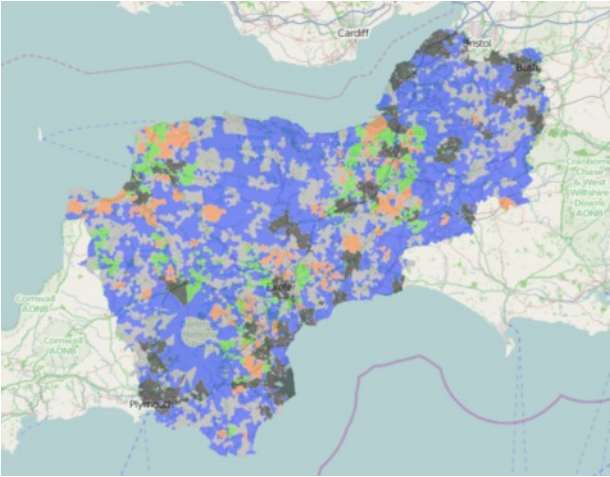
Of great interest to many in our community is Broadband availability. Although not the responsibility of Taunton Deane Borough Council, I do take a very close interest in its progress because of the enormous benefit a decent service can provide.

Within the Parish of Neroche we have three telephone exchanges that I believe serve most of the area, these are: Hatch Beauchamp; Taunton (Orchard Portman & Netherclay); Buckland St Mary (01460 exchange numbers). All of these exchanges have been enabled for Superfast Broadband service, and the position with each is;



Hatch Beauchamp. *The exchange is enabled but five junction boxes (green cabinets) have yet to be enabled, the important one for Neroche Parish is the box adjacent the A358 at Capland, which requires a duct under the A358 to install the fibre optic cable. However, it appears there is a Section 58 order on the A358 preventing any excavation through the road surface until April*

2016. This is due to the road having been recently re-surfaced. I have raised this with Highways to see if this can be varied and will also pursue with them alternative means of crossing if no relaxation of excavation within the period stated. Unfortunately, even with this green cabinet enabled, its coverage of Neroche Parish is very limited, with superfast up to a 1.2 km radius from the cabinet, dropping to around 2 Mbps at about 2 km radius.



This will leave areas of Bickenhall, and most of Curland and Staple Fitzpaine, with the minimum speed of 2 mbs that CDS are contracted to provide to all properties. The question of installing fibre optic cable and an additional strategically located green cabinet to better serve these areas around Staple Fitzpaine and Curland, has been pursued. At present, the

response is negative due to budgetary constraints but the point will continue to be pressed, and see below further comment on the pending “Superfast Extension Programme” to raise coverage to 95% of properties or more.

Taunton. This mainly involves Orchard Portman and the Netherclay area where properties are a long way from the nearest green cabinet. It appears that, because Taunton has been commercially enabled for Superfast by BT, the ‘not spots’ such as these on the perimeter of Taunton, are not eligible for public subsidy under the current phase one of the CDS programme. Attempts are being made to address this under the ‘Superfast Extension Programme’

Buckland St Mary. This covers 01460 numbers in Neroche Parish. Due to the distance these properties are from the exchange, there is no realistic prospect of them being enabled under the CDS phase one programme. The only possible improvement in the short term will be the requirement to provide at least 2 Mbps to all properties by the end of 2016. In addition, for the medium term, the ‘Superfast Extension Programme’ will hopefully help resolve these problems and provide a better service.

Just to clarify, the ‘Superfast Extension Programme (SEP)’ is a further £38 million of grant funding from Government, Somerset County Council, District and Borough Councils, and the Local Enterprise Partnership, to extend coverage of Superfast Broadband. Taunton Deane Borough Council is investing £380,000 in this programme to ensure we secure the maximum benefits possible for our rural communities that have not benefited from phase one of the CDS programme.



The intent is to raise the coverage of properties from the previous 90% to a minimum of 95% but as near 100% as possible; in Taunton Deane it is estimated this will be in excess of 3,500 properties. Tender for the works is now being sought, with a view to a contract being placed in May 2015 and works scheduled to be completed by the end of 2017. Until the contract is agreed and placed, it is not possible to identify the location and accurate number of properties that will benefit but it should bring substantial extra coverage, as it will be focussed on reaching the rural areas presently left behind.

Although not necessarily welcome news for some, hopefully I have been able to inform debate and set out the plans for the future. This is a massive engineering project but I am confident it will show great improvement in our communications infrastructure to benefit a substantial part of our community. Notwithstanding this, it has to be accepted that some properties will not be reached due to their remoteness, and for them alternative solutions may have to be considered. *(You may also wish to see Tim French's 'Broadband' article on page 42.)*

Please do not hesitate to contact me for any clarification or comment on the above or if you have any other queries in respect of Council services.

cllr.j.williams@tauntondeane.gov.uk

News from Bickenhall & District WI

By Nicky Baxter

A number of members attended the county annual meeting at Westlands in Yeovil. There we heard a number of interesting speakers, including a lady from a breast reconstruction support group and an organ transplant specialist



nurse. Our annual national resolution for 2014 was about organ transplant. The main speaker of the day was former politician Michael Portillo who had the whole conference in fits of laughter with his humorous tales of his former political and current media life. We learned that he and Diane Abbott (*'This Week' BBC1 Thursday nights*) went to school together and are the best of friends, despite being on different sides of the political fence. We all wondered what colour he would be wearing, and he did not disappoint, with a lovely shade of lilac purple jacket. We were also delighted to hear at the meeting that our own Di Grabham had won the competition to design a notelet, as

part of 100 year celebrations (see later).

On the activities side of things, we have been busy playing skittles. Unfortunately, we were knocked-out of the county tournament but have continued to play friendly matches against local and other WI teams. We are also thinking about forming a book club as many of our members enjoy reading. Our Christmas Bingo was a lot of fun, with plenty of laughs, festive prizes up for winning, and money raised for funds as well. A really good evening out for the whole family.

On the business side of things, we have recently voted on what will be our national resolution this year. The choice was wide, far reaching and included issues that really matter, including: public access defibrillators; cutting back on food waste; assessment of need in long term care; curbing the use of antibiotics; the next 100 years; plant a tree; and ending female genital mutilation. After a resolution has been chosen, it will then be presented to the whole WI, and vote taken on whether to adopt it.

Nationally, the WI is 100 years old this year, and our own President, Trisha Dryden, is involved in the making of 'the county quilt' to commemorate this event. She will also represent Bickenhall at the centenary AGM, which takes place on 4th June at the Royal Albert Hall, London, and will be relayed live via satellite around the country.



Our last meetings have been most enjoyable. At December's meeting all members learned how to make a charming Christmas decoration to take home. January started with our 88th birthday party, attended by members and our WI advisor, Veronica Andrews. This took place at the Greyhound Inn where

business was quickly dealt with. The results from the monthly competition were announced with Brenda Crossley in first place, Di Grabham second and

Frances Alford and Elizabeth Westlake third. We all enjoyed a delicious lasagne followed by a selection of ice cream and coffee. Entertainment took the form of a singing quiz and a sketch entitled 'Bridget and Joan's Diary' - a parody performed by Di Grabham and yours truly.



Left-to-Right: Elizabeth Westlake, Di Grabham, Brenda Crossley, Frances Alford, Trisha Dryden

All-in-all an excellent start to the year.

Neroche Woodlanders at Young Wood

Introduction by Wally Torrington; article by Gavin Saunders

The community woodland initiative **Neroche Woodlanders** is based in our parish, in Young Wood, between Staple Fitzpaine and Thurlbear. This most popular social enterprise is a legacy of the highly successful Neroche Scheme, which has been running since 2006. We are delighted that the Woodlanders decided to base themselves in our parish because they have proved to be a great social asset and a valuable local focus for outdoor



pursuits. However, volunteers are what make Young Wood tick. Shaping the place, looking after the forest, creating spaces for others to come and be. Sessions are friendly and welcoming, as they are learning together. Why not join them for one of their volunteer days?



It's the depth of winter in the woods, but there are already signs of the coming spring. The cuckoo pint is already poking through the leaf litter, little heaps of primrose leaves are bubbling up, and if you scratch the surface you will see the sharp green rosettes of bluebell leaves waiting to emerge. The woodpeckers and jays are quarrelling in the tree tops and the deer are in the shadows, sporting their thick grey winter coats with bright white rumps.

Meanwhile we're continuing a range of activities at our camp and across the 100 acres of Young Wood. Our roundhouse is now weatherproof, and providing a dry space for green woodworking sessions and other activities. We have been opening up old trackways around the woods, which have been inaccessible for years. We're beginning to collect saplings from around the wood to establish in a small tree nursery, and use to restock harvested areas in the future.



Our Wild Learning sessions are continuing every Tuesday, bringing unemployed and homeless adults and others with personal challenges in their lives, into the woods for quality time learning new skills and mixing with others

in a leveling, non-judgmental setting.

Meanwhile we're planning an Open Day at Young Wood on Wednesday 1st April. Yes – on April Fools Day: but the ancient meaning of the Fool was the Wanderer, or Storyteller, leading a journey through the mysteries of life. And on that day we will be



offering a chance to wander the woods and enjoy the stories of spring wildlife.

The 1st April event will also mark the point when Neroche Woodlanders will begin inviting people to become shareholding members of our social enterprise. Anyone interested in supporting our social and environmental aims will be able to purchase a share, for as little as £5, and become a part of our journey. More details will be advertised nearer the time.

Visitors are always welcome at Young Wood – just give us a call so we can say when someone will be on site. Volunteer sessions at Young Wood take place on the fourth Wednesday of the month - all are welcome. Meanwhile Neroche Conservation Volunteer events take place on the second and third Wednesdays – contact us for more details. To get in touch, email Gavin on gavin@nerochewoodlanders.org, or phone 07760 665378. Or find us at www.youngwood.org.uk

25th February - Volunteering day at Young Wood, continuing with the green roof on the round house. 9.30 to 3.00

11th March - Volunteering day at Mount Fancy East, scrub bashing on the butterfly reserve. 9.30 to 3.00

25th March - Volunteering day at Young Wood. 9.30 to 3.00

1st April - Open Day at Young Wood - spring walks and wild activities in the afternoon

15th April - Volunteering day at Mount Fancy, cutting conifer regrowth on the heath above Shutes. 9.30 to 3.00

22nd April - Volunteering day at Young Wood. 9.30 to 3.00

Superfast Broadband in Neroche (if you are very lucky!)

By Tim French (Chair of the Neroche Communication Action Group)

What's happening to the promised Broadband improvements? The short answer for many premises in Neroche Parish could be "sweet Fanny Adams"



Connecting Devon
and Somerset

For several years we have heard of a scheme to introduce **Superfast Broadband** to the UK, using fibre optic technology. Initially, it was to cover 90% of premises nationwide. Now, as a result of additional funding, the figure has risen to 95%. John Williams, our Borough Councillor for Neroche Ward, hopes that this will be sufficient to include almost all premises in its area (see John's article on page 34).

The percentage figures quoted above relate to the UK or a regional scheme as a whole, not to a smaller locality like Neroche Parish. However, the system 'Connecting Devon and Somerset (CDS)' is using is designed for urban areas, with short copper wire runs to the premises from a nearby fibre-enabled 'green box'. Rural areas will end up with a lower percentage of premises with superfast broadband (or even no improvement) because of their long distance from the green box (see below).

But what does this mean for Neroche Parish? Will our own home or business really get superfast broadband (defined as 24Mbps)? Will it at least get a marked improvement in speed and reliability? Will it only receive "a minimum speed of 2 Mbps" (too slow to stream TV), which has been set as the minimum speed to be provided by the CDS scheme? Or, worse still, will it be left outside the CDS scheme, and get no benefit?

How might a premises be outside the scheme? There are two ways. First, the funds available might be insufficient to provide an improved service to thinly populated areas distant from existing exchanges (e.g. 01460 numbers in Curland and Staple Fitzpaine connected to the Buckland St Mary exchange). Second, it is not eligible for help if the premises is linked to an exchange, which

was fibre enabled by a commercial firm before the scheme commenced (e.g. Orchard Portman and Netherclay premises linked to Taunton exchange),

How can you find out? Those with access to the internet should use the CDS website. Go to: <https://www.connectingdevonandsomerset.co.uk/>. The ‘Where and When’ map allows you to type-in a post code to find whether your premises is in the 90% zone (*not the final 95% plus zone*) and what level of service you might get. The ‘Big Build’ video explains the different ways that broadband can be sent to an area after it has been “fibre optic enabled”. There is a ‘Frequently-Answered-Questions (FAQ)’ section. The final 95 % plus coverage will not be known for some time.

The information on the CDS website makes grim reading... even when combined with the latest update from John Williams (again, see page 34).

- Orchard Portman and Netherclay remain outside the scheme.
- Thurlbear properties connected to the Henlade exchange should be fibre enabled by October 2015. Information on broadband speed is not available.
- 01460 numbers in Curland and Staple Fitzpaine are currently outside the programme but might benefit from the additional funding. John Williams believes they will receive at least 2Mbps by the end of 2016, with later improvements possible under the Superfast Extension Programme.
- The “green box” (distribution box) for 01823 numbers, connected to the Hatch Beauchamp exchange, should be fibre enabled by



October 2015, according to the CDS website, but this has been threatened due to a muck-up, delaying laying the cable under the road (see John Williams article, page 34). *Broadband speed will vary with the length of copper wire cable from the green box to the premises.* Very few will get superfast broadband, perhaps some Bickenhall and Curland residents, many of whom should at least get improved speed.

Staple Fitzpaine village residents, and those further away, will not benefit. Those missing out will be in the “minimum 2 Mbps” group.

Note: Broadband speed to a premises relates to the copper wire cable length from a fibre enabled green box, *not the distance as the crow flies*. The quoted figure for receiving superfast broadband (greater than 24Mbps) is up to 1.2km/0.7 miles distance; for getting 2Mbps it is 2km/1.2 miles; longer distances means even lower speeds. These figures can be deceptive as many factors can affect it. Lower speeds than expected have been reported in Corfe Parish since they were upgraded.



What needs to be done? What follows is a personal opinion:

It is ‘barn door obvious’ that the planned improvements to broadband in rural areas have been set at an absurdly low level. **Nothing short of a policy for rural areas in the UK having the same access to broadband as the rest of the country is acceptable.** The consequences of not having it include the effect on business, education, home life and entertainment, shopping and the value of property. This is expanded on the Neroche Villages website at: <http://www.nerochevillages.org.uk>.

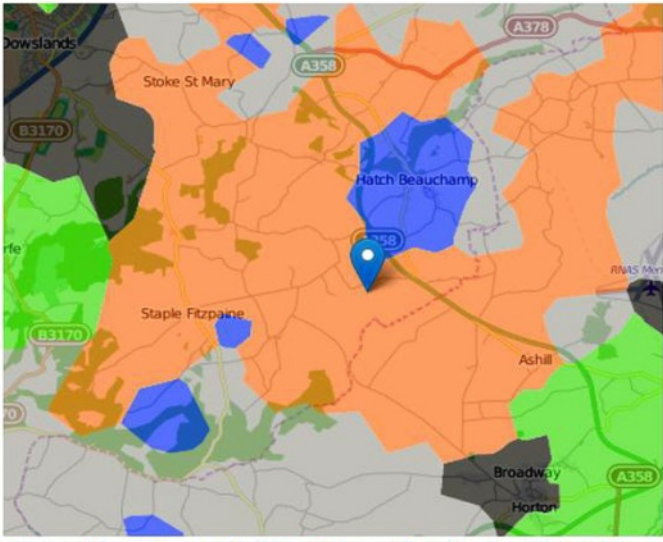
The extraordinary thing is that we are expected to be grateful for what’s on offer to rural communities.

There has been talk of alternative technologies becoming available. Of course, there are technologies that have been successfully used for years overseas in isolated rural areas. **Whatever new technologies are introduced they should deliver superfast broadband to rural communities, not “a minimum of 2Mbps”. And all premises should receive it,** including those who were connected by a commercial company such as in Netherclay.

It is equally obvious **this is a long term political issue** that needs to be addressed. The encouraging thing is that efforts have already been running for some time. For example:

- John Williams, and the Taunton Deane Borough Council, have worked as hard as possible to maximise the benefit to our patch from a flawed, underfunded scheme that is using the wrong technology for a rural environment; a technology designed for closely packed urban settings rather than a rural one.
- Neroche Parish Council has taken two important steps. First, it has appointed a member to join the Blackdown Hills Parish Network so that it can act in concert with other Somerset and Devon parishes on the issue of rural broadband. Second, it sent a written submission to the Environment, Food and Rural Affairs Committee of the House of Commons for its investigation of

R u r a l
Broadband and
Digital Only
Services. This
e x c e l l e n t,
d e t a i l e d
d o c u m e n t
addresses the
issues clearly
and joins other
submissions sent
from Blackdown
parishes. An
essential read, to
be found on the
N e r o c h e
Parishes website at



Green Live; Orange Coming Soon; Blue Under Evaluation; Grey Out of Programme; Black Commercially Covered

Parishes website at <http://www.nerochevillages.org.uk>.

- The prospective parliamentary candidates for the main parties have all expressed a commitment to the issue.
- **But we must act to closely monitor the local situation, in conjunction with the new MP, and our County, Deane and Parish Councillors.** We need sound, neutral, professional technical advice on all the current options available (both nationally and internationally) plus information on emerging technologies. The current proposals for the majority of Neroche Parish are totally unacceptable. Perhaps, at the coming Annual Parish Meeting, we should discuss setting-up a Neroche Broadband Action Group, as was proposed in the Parish Plan.

Neroche Hall Fun Quiz

(with Fish'n'Chips)



Friday 20th March 2015

(7.00pm for 7.15pm start)



Featuring quiz master: Colin Croad

Teams of up to six

£2.00 per person (food extra)

b.y.o. Drink

Full details are on the village hall website: www.nerochehall.org.uk



The last quiz (11th October) was won by a team captained by Curland's David Spears.

Team members from left to right; Ross Henley, David Spears, Jill & Alan Perrior, Dai & Yvonne Rees.

Can they be beaten?

Neroche Parish Walking Group

A doughty band of 11 walkers set off in windy, squally weather to walk downhill from Neroche Woods all the way to the Greyhound pub for our annual lunch. A great time was had by all.



Come and join our friendly group as we explore the lanes and byways of our beautiful parish. We meet at 10am on the first Saturday of each month at Home Mead, next to the Greyhound pub car park. ***For more details phone Jane on 01460 234410 or Sheila on 01823 480758.***

Neroche Take Art presents
THE TENANT OF WILDFELL HALL



A story by Anne Bronte and performed by
Live Wire Theatre & Butterfly Psyche

FRIDAY 6th MARCH 2015



Live Wire Theatre together with Butterfly Psyche Theatre have created three brilliant, new stage adaptations of the Bronte sisters' classic novels: Emily Bronte's Wuthering Heights, Charlotte Bronte's Jane Eyre and Anne Bronte's The Tenant Of Wildfell Hall. Performed in rep, with only one or two actors and adapted by critically acclaimed writers Dougie Blaxland and Alison Farina, these new productions show very clearly how progressive and brave the Bronte sisters really were. Their passionate, iconic and timeless stories (written nearly 200 years ago) touch upon issues that are still very much relevant today.

The three plays were performed as part of the Bronte Season in Bath during 2013 to universal acclaim and it is a real scoop for Take Art and Neroche Hall to be offered The Tenant of Wildfell Hall.

'Live Wire Theatre & Butterfly Psyche' is a Bath-based professional theatre company specialising in collaborative working, outreach and new writing.

Doors open at 7.30pm for an 8.00pm start

Bar and Nibbles available

Tickets from Anne 01460 234377

or e-mail anne@poolesfarm.eclipse.co.uk

or on-line at www.wegotickets.com/event/301332

Film Nights at Neroche Hall

All films start at 7.30pm

Entry £6

Bar & Snacks available

Friday 27th February 2015

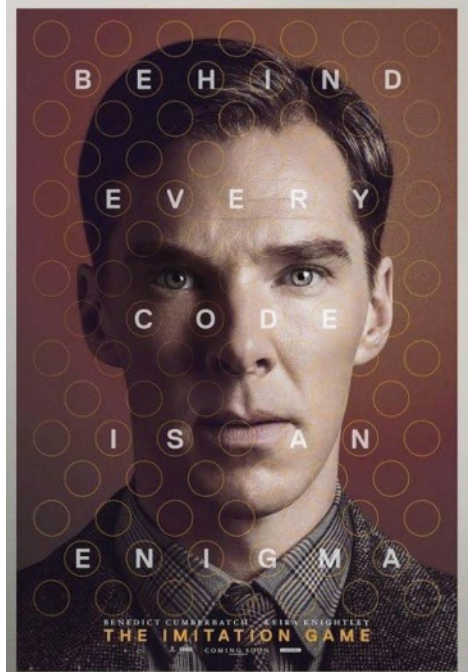
Effie Gray

Friday 27th March 2015

The Hundred Foot Journey

Friday 24th April 2015

The Imitation Game



If possible let Anne or Nicky know that you are coming: Phone Nicky on 01823 480675 or e-mail Anne at anne@poolesfarm.eclipse.co.uk

Come Dancing - not Strictly!



Dance to live music provided by
King's College Big Band

May 2nd 2015

Neroche Hall, Bickenhall

7.00pm until late



2 course meal and coffee
bar

tickets **£17.50** per person

tickets: 01823 480888 or 01823 480675

info: anne@poolesfarm.eclipse.co.uk

lucky ticket draw & raffle



WOMEN'S WORLD DAY OF PRAYER

The 2015 Service is written by women of

THE BAHAMAS

This will take place on

FRIDAY 6th MARCH 2015

at

St Peter's Church, Staple Fitzpaine at 11.30am

Everyone welcome.

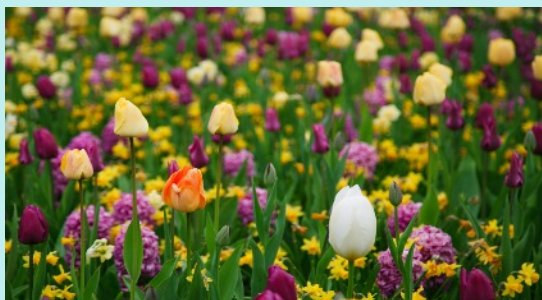
Light lunch will be served after the service

For further details ring Alison Brown 01823 480441

Mothing Sunday Service

St Peter's Church Staple Fitzpaine

10.00 am Sunday 15th March 2015



Everyone is most welcome

ST PETER'S CHURCH, STAPLE FITZPAINE EASTER SERVICES 2015

Good Friday 3rd April - 11.00am

Easter Sunday 5th April - 10.00am

Looking Back at 2014



A message from Huw Jenkins (Police Sergeant to the Taunton Urban and Rural Neighbourhood Beat Team)

It was a busy period for us over the Christmas holidays, dealing with unruly revellers and, with the national ‘Drink Drive’ campaign. Over that period we stopped 3,486 drivers in West Somerset, which led to 19 arrests for driving over the prescribed limit. In Taunton alone we stopped 1,213 vehicles leading to the arrest of 6 drivers. These are positive results representing a sharp decline in drink drive offending

over previous years.

October 2014 saw the opening of the new Police Centre in Bridgwater. After some minor changes to the way we previously worked, things are moving forward in a positive way. But please don’t panic, there is still a large contingent of officers in Taunton to keep you safe.

Some of you may have noticed a large ‘To Let’ sign on Taunton Police Station and it is true that the constabulary wishes to lease the building or even sell it. However, I can assure you that positive steps are being made to find new premises, in the heart of Taunton, that will be fit for purpose and more cost effective to the tax payers.

Another 2014 development was the issuing, to all Police Officers, of new Nokia smart phones. These phones have the capability of being able to access Police systems, and perhaps more importantly, they can provide contact numbers when needed, thereby avoiding the need to dial the “dreaded” 101 number.



2014 also saw the introduction of a fleet of 1.7 Turbo Diesel Vauxhall Astra estates. These have been fitted with a new black box system to help maintain high standards of driving and fuel efficiency. Each vehicle is fitted with a swipe card system that logs the driver in and monitors driving performance, such as acceleration and braking. This information is also displayed, on the dashboard, by a series of lights similar to that of a traffic light system.



Here’s to a prosperous 2015 to you all and, until the next time, stay safe.....

Taunton Racecourse Extension to the Paddock Stand

By Wally Torrington



Philip Hobbs and Paul Nichols

The long awaited extension to the Paddock Stand at Taunton Racecourse is now finished and looks terrific (both inside and out). It was officially opened by two of Somerset's leading racehorse trainers, Paul Nichols and Philip Hobbs, who regularly have runners at the Orchard Portman course. Champion trainer Paul Nicholls said *"I was delighted to be invited to cut the ribbon and officially open the newly extended Paddock Stand. Over the years I've enjoyed a long and happy association with everyone at Taunton, and the*

extension work they have carried out will be enjoyed by everyone; the owners, trainers and members."

Philip Hobbs, who trains in West Somerset at Bilbrook, said *"I was delighted, along with Paul Nichols, to be asked to open the new extension. Taunton does a great job with their high level of prize money for owners and it is fantastic that they can also invest to improve facilities."* Bob Young, the Chief Executive, said *"We have had some very encouraging comments from our owners and trainers, and also from the members.*



Extension: Ticket Hall on ground floor with larger Owners and Trainers Bar; extension to Members Restaurant on first floor; Paddock Gallery Cafe terrace on roof.

Everyone has welcomed all the improvements we have made.

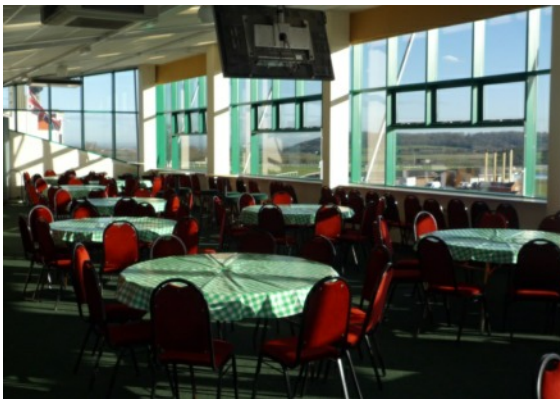


Extension to Members Restaurant

Café and Bar; and new service areas on the first and second floors. The project will not only provide additional accommodation for trainers, owners, annual members and visitors during the racing season, but will also be available for a wide range of conferences and other social activities during the closed season. It will also provide valuable employment in this rural



Members Restaurant, overlooking the finishing post



The Paddock Gallery Cafe with a panoramic view of the racecourse and the Blackdown Hills

The magnificent £400,000 extension provides: a new under-cover pedestrian visitor access and ticket hall; extra accommodation in the Owners and Trainers Bar; accommodation for circa 70 additional covers in the Annual Members Bar and Restaurant; a terrace added to the top floor Paddock Gallery

area. The racecourse management are particularly grateful to the British Horseracing Authority for their £50,000 contribution.

For more information on how to join Taunton Racecourse as an Annual Member to enjoy all the wonderful new and existing facilities, go to info@tauntonracecourse.co.uk or call 01823 337172

2015 Fixture List

Thursday	26th February	2.10pm	5.10pm	Royal Bath and West
Monday	9th March	2.20pm	5.20pm	Landlords Day
Monday	16th March*	2.15pm	4.50pm	Free Racing
Monday	23rd March	2.20pm	5.20pm	Spring Fixture
Thursday	2nd April*	2.10pm	5.05pm	Easter Meeting
Thursday	9th April	2.10pm	5.10pm	Ladies Day
Wednesday	22nd April*	5.40pm	8.10pm	Evening Meeting
Thursday	12th November	1.10pm	4.10pm	Opening Fixture
Thursday	26th November	12.35pm	3.55pm	Autumn Meeting
Thursday	10th December	12.40pm	3.40pm	Festive Meeting
Wednesday	30th December	12.40pm	3.55pm	Christmas Meeting

Racecourse Car Boot Sale

The Taunton Racecourse Afternoon Car Boot Sale, hosted by Paul's Promotions was launched on Sunday 1st February and will continue, henceforth, every Sunday & Bank Holiday Mondays (weather permitting). Buyers from 1.30pm to 4.00pm, Sellers arrive at 1.00pm. For more Information please call Paul or Chris on 07900 621199 or 07766 740046 Facebook Paul's Promotions or visit www.tauntoncarboot.co.uk

Your VOTE is your VOICE

Be HEARD - 7 May 2015

Parish Council Elections

and

General Election



On Our Doorstep

There are numerous activities taking place within the Parish that are well advertised in this Newsletter, the Parish Magazine, the Email Alert and on the Community Website, however, there are many more happening 'On Our Doorstep' that you might not know of; here are a few that you may find of interest...

Blackdown Hills AONB Events Programme.

The Blackdown Hills AONB Partnership produces a programme of activities titled '*Blackdown Hills Countryside Events*'. The published programme for 2015 is packed with a variety of activities; why not join them on one of their programmed events (for full details of these and many others, go to www.blackdownhillsaonb.org.uk):

07 Mar 15 'Skills of the Hills: The Hedge Event'

Location: Gorwell Farm, Hemyock

The annual celebration of hedgelaying and hedge-related crafts in the Blackdown Hills. See hedgelayers take part in one of the largest hedgelaying competitions in the country. Craft demonstrations and stalls. Outdoor activities for youngsters. Hot food and drink. £2 per car. For more information: email richard.hooker@bhha.info or see the web site www.bhha.info



18 Mar 15 'Introduction to Deer Management'

Location: Park Farm, Wellington, TA21 9NP

An introduction to deer management covering all aspects: high seats, stalking, diseases, deer damage, densities, senses, risks, the law, safety and lots more; led by DSC 2 trainer. Cost: £90, or £75 to BEDWA members, to include a light lunch. Booking essential. For more information: contact John Greenshields on 01823 660764 or e-mail parkfarm@tinyonline.co.uk. More details at www.woodbiz.co.uk 10am – 4pm. Blackdown and East Devon Woodland Association

‘Neroche Conservation Volunteers’: 11 Mar, Mount Fancy Farm; 18 Mar, Culm Davy; 25 Mar, Young Wood; 08 Apr, Quants; 15 Apr, Mount Fancy; 22 Apr, Young Wood.

Join us for a practical volunteering day in the fresh air. Tasks vary throughout the year and include cutting and raking scrub, opening up glades or widening paths, all designed to help wildlife and keep areas accessible. Tasks take place on sites owned or managed by Forestry Commission, Butterfly Conservation, Blackdown Hills Trust and Somerset Wildlife Trust sites. All tools and instruction provided. See www.ncvolunteers.org



The Square and Compass, Ashell.

The Square and Compass hosts a vibrant and diverse range of musical events, spanning the full range of musical styles. Events from February onwards, include: **Sat Feb 28, British Blues all Stars.** *Check this out, Zoot Money, Gary Fletcher, Pete Emery, Dave Kelly, & Pick Withers, line-ups don't get better !!!*

Sun Mar 15, Talon Acoustic. *Our mates from the famous Talon doing their sitting on stools playing what they feel like on the night set (it always looks effortless).* **Fri Apr 3, Desperado Eagles.** *Hotel California, Take it Easy, Tequila Sunrise & all the classic hits played to perfection.* **Thurs Apr 23, Gerry Macavoy's Band of Friends.** *Rory Gallagher's band playing his music, with high energy and love. This has become one of the best nights music you will ever see, here or anywhere.* **Sun Apr 26, Girlz with Guitars.** *Dave the promoter is getting excited about this one.* **Thurs Apr 30, Albert Lee & Hogan's Heroes.** *Just about the best guitarist in the world (ask Eric Clapton, ask Ronnie Wood, ask Keith Richards) with his top band here in our tiny pub; on sale now !!!!* **Fri May 8, Chris Difford & Glenn Tilbrook (Squeeze).** *A*



tiny gig for them, a massive gig for us! **Thu May 28, Richard Digance & Tom Leary.** *Multi talented National Treasure with help from another brilliant musician.* Later on this year; **Dr Feelgood , Andy Fairweather Low, Focus, The Producers, Wishbone Ash, Blues Band,** and many more. For full information on these concerts and many others, go to www.squareandcompasspub.com

Ilminster Arts Centre

The Ilminster Arts Centre is situated at the Meeting House in Ilminster. It has a full programme of exhibitions, concerts, workshops, crafts and produce markets, and a thriving craft shop and café. For full details



of their forthcoming events and extensive programme, go to www.themeetinghouse.org.uk

Brewhouse Theatre, Taunton

Taunton Thespians: Tons of Money 3rd - 7th March; Tony Stockwell: Psychic Medium: 11th March; King John: 12th March; Tony Hawks: Once Upon a Time in the West Country: 16th March; The Pete Allen Jazz Band: 21st March (evening); Somerset Storyfest: Magic Flute: 21st March (afternoon); Oas-is: 28th March; The Little Mermaid: 8th & 9th April; Hazel O'Connor: 17th April; Barron Knights: 18th April; How The Koala Learnt To Hug: 25th April; Talon - The Best of the Eagles: 30th April & 1st May; Back to Braodway: 2nd May; Danny, Champion of the World: 18th & 19th May; Richard Herring's Lord of the Dance Settee: 22nd May.

Check out the online box office at www.tauntontheatre.org.uk for forthcoming shows and events and browse the show list. Tickets are also available from Taunton Tourist Information



Centre, Paul Street, Taunton, and from the Brewhouse Box Office direct. Telephone 01823 283244

Email Alert Parish Notices

If you wish to be kept informed of all that is happening in the community (including: crime alerts; road closures; community activities; local events; important meetings etc etc) then why not add your email address to the 260 plus individuals that have already signed-up to the service.

Your details will be kept secure, as all Email Alerts use the BCC address system so that nobody sees the full list.

If you are not on the list, then you are missing-out on 'up-to-the-minute' information on all that is important and happening in the immediate area in which you live.

To join, send an email to: wallytorrington@hotmail.com with the message "please add me to the list".

We look forward to you becoming a fully-informed Neroche resident.

School Holidays

It is always useful to know the school holidays dates. The dates below include, where appropriate, the weekends either side, as these are equally affected by school breaks, especially regarding family holidays and road traffic.



28th March 2015 to 12th April 2015 (Easter)
23rd May 2015 to 30th May 2015 (Half Term)



Household Recycling & Refuse Collections for March 2015 to May 2015



Usual **Refuse** Collection 27th May - Revised Collection 28th May
Usual **Recycling** Collection 6th April - Revised Collection 7th April
Usual **Recycling** Collection 4th May - Revised Collection 5th May

Events For Your Calendar

March

- 4 Greyhound Quiz Night
- 5 Neroche Thursday Lunch Club (see advert on page 11)
- 6 Take Art Event (see advert on page 47)
- 7 Community Litter Pick-up Day (see advert on page 17)
- 7 Neroche Walking Group (see advert on page 46)
- 9 Taunton Racing (go to www.tauntonracecourse.co.uk)
- 12 Parish Council Meeting (see www.nerochevillages.org.uk)
- 15 Mothering Sunday Service (see advert on page 50)
- 16 Taunton Racing (go to www.tauntonracecourse.co.uk)
- 20 Neroche Hall Quiz Night (see advert on page 46)
- 23 Taunton Racing (go to www.tauntonracecourse.co.uk)
- 27 Neroche Friday Film Night (see advert on page 48)
- 28/29 Rural Living Show at Taunton Racecourse (go to www.tauntonracecourse.co.uk)

April

- 1 Greyhound Quiz Night
- 2 Neroche Thursday Lunch Club (see advert on page 11)
- 2 Taunton Racing (go to www.tauntonracecourse.co.uk)
- 4 Neroche Walking Group (see advert on page 46)
- 9 Taunton Racing (go to www.tauntonracecourse.co.uk)
- 22 Taunton Racing (go to www.tauntonracecourse.co.uk)
- 23 Annual Parish Meeting (see notices on pages 26 & 27)
- 24 Neroche Friday Film Night (see advert on page 48)

May

- 2 Neroche Walking Group (see advert on page 46)
- 2 Dancing to Kings College Band (see advert on page 49)
- 6 Greyhound Quiz Night
- 7 Parish Council Election & General Election
- 14 Neroche Thursday Lunch Club (see advert on page 11)
- 14 Parish Council Meeting (see www.nerochevillages.org.uk)
- 16 West Somerset Singers concert (see article on page 18)
- 29 Neroche Friday Film Night (see advert on page 48)

**For further information go to the parish website
www.nerochevillages.org.uk**

**See, also, the many various events listed in the
'Neroche Woodlanders' article on page 40 and the
'On Your Doorstep' article on page 55**



Local Communication and Information

Websites:

Neroche Villages – www.nerochevillages.org.uk

Community website run by the Neroche Communication Action Group. It has an up-to-date calendar of events; a news section; information about residents' action groups, e.g. on broadband, traffic; a business section and advertisements. The website features a comprehensive list of clubs and organisations, including details of those in neighbouring parishes. It is also the website of Neroche Parish Council and lists its activities, agenda, minutes and official documents.

Neroche Hall– www.nerochehall.org.uk

It lists the coming events, facilities and availability for hire of our village hall, and has an online booking form.

The Church of England Seven Sowers Benefice – www.sevensowers.org.uk

This website has a calendar of events and church service times for Staple Fitzpaine and Orchard Portman churches, as well as other churches in the benefice.

Email Information:

The Neroche Communication Action Group runs an Email Alert System for sending information to those wishing to receive it. It forwards information of a general nature about local events and issues - please contact Wally Torrington at wallytorrington@hotmail.com if you would like your name added.

The Parish Magazine:

Full information on benefice matters, a great source of news, coming events and general information, and details of many local businesses and services. For new subscriptions phone Kate Reynolds on 01823 444023.

Many thanks for taking the time to read this Newsletter.

The views expressed in this newsletter do not necessarily represent those of the editor or the Neroche Communication Action Group. Publication of an advertisement in, or with, the newsletter does not imply the Action Group's approval of the goods or services.

Project Coordinator: *Wally Torrington* **Editor: Alan Perrior**
wallytorrington@hotmail.com nerochenewsletter@yahoo.co.uk

Official Photographers: David and Madeleine Spears
david@cloudshillimaging.com

Printed by 'Parish Magazine Printing' - 01288 341617